

## BEAM CLAMPS

*Power-Strut offers beam clamps designed for every loading condition from light to heavy duty. Styles are available to attach to nearly every type of support beam.*

---

### **MATERIAL:**

Power-Strut beam clamps are cold formed from hot rolled, pickled and oiled steel. Square head, cone point set screws are furnished where noted. Cast beam clamps are made from high quality malleable iron.

---

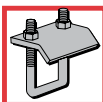
### **STANDARD FINISH:**

Standard finish is plain or electro-galvanized.

---

### **ORDERING INFORMATION:**

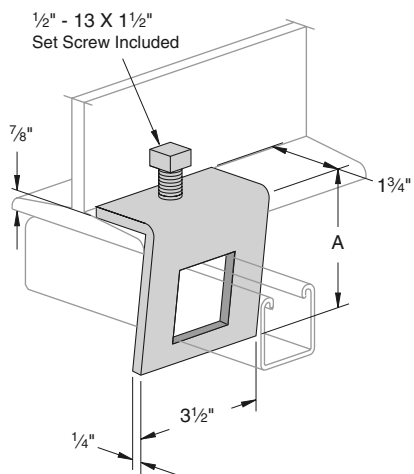
When ordering, add the length or size and finish to the part number. See pages 8-10 for finish abbreviations and an example.



# BEAM CLAMPS

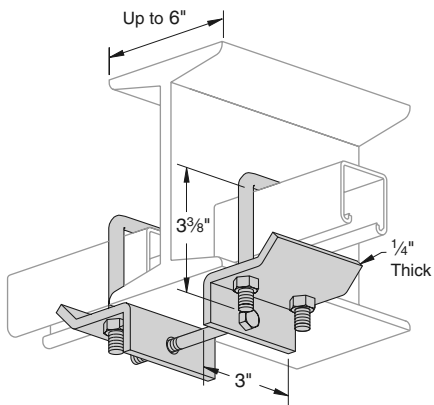
**Finish:** Painted Green or Electro-galvanized **Order By:** No. and Finish **Note:** Use in pairs or with other support

## PS 855 – Angular “I” Beam Clamp



Part No.	Use With	A	Load Rating	Wt./100 pcs.
PS 855-1	PS 200, PS 210	3 1/2"	500	107
PS 855-2	PS 500	2 11/16"	500	98

## PS 2657 – Double U Beam Clamp



Specify 6" or 12" max. flange width  
(Example: PS 2657 T1-6")

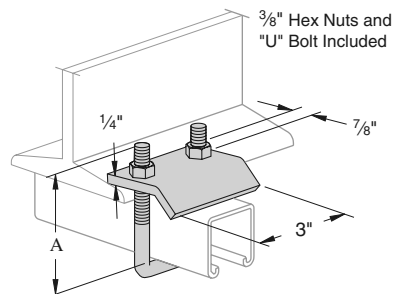
T1 Use with PS 200, PS 210, PS 300,  
PS 400, PS 500, PS 520

T2 Use with PS 100, PS 150, PS 200 2T3

T3 Use with PS 150 2T3, PS 100 2T3

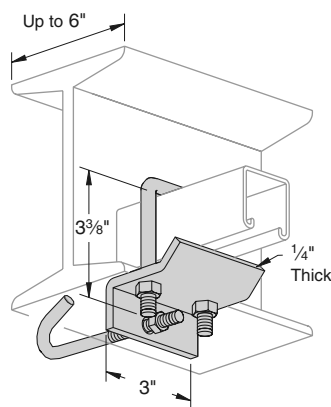
Weight/100 pcs: 280 lbs.

## PS 2651 – Beam Clamp



Part No.	Use With	A	Load Rating	Wt./100 pcs.
PS 2651 T1	PS 200, PS 210 PS 300, PS 400 PS 500, PS 520	3 3/8"	1,000	83
PS 2651 T2	PS 100, PS 150 PS 200 2T3	5"	1,000	92
PS 2651 T3	PS 150 2T3 PS 100 2T3	8 1/4"	1,000	112

## PS 2656 – U Bolt Beam Clamp With Hook



Specify 6" or 12" max. flange width  
(Example: PS 2656 T1-6")

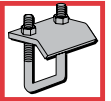
T1 Use with PS 200, PS 210, PS 300,  
PS 400, PS 500, PS 520

T2 Use with PS 100, PS 150, PS 200 2T3

T3 Use with PS 150 2T3, PS 100 2T3

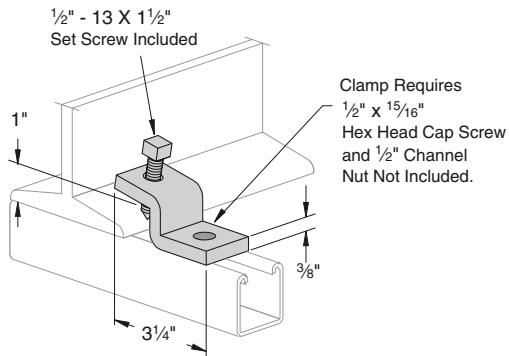
Weight/100 pcs: 143 lbs.

# BEAM CLAMPS



**Finish:** Painted Green or Electro-galvanized **Order By:** No. and Finish **Note:** Use in pairs or with other support

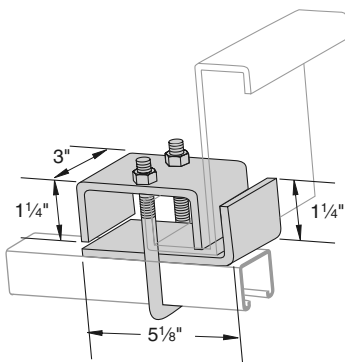
## PS 685 – Beam Clamp



Stock Thickness: 3/8"  
Load Rating: 450 lbs.

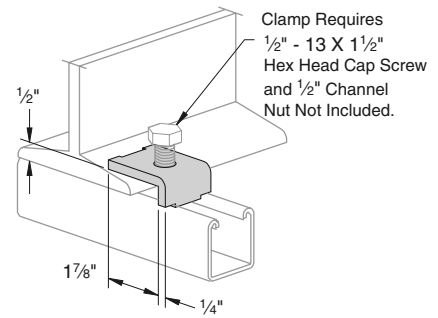
Weight/100 pcs: 63 lbs.

## PS 2653 – Purlin Clamp



Part No.	Use With	Load Rating	Wt./ 100 pcs.
PS 2653 T1	PS 200, PS 210, PS 300	1,200	175
PS 2653 T2	PS 100, PS 150, PS 200 2T3	1,200	179
PS 2653 T3	PS 100 2T3	1,200	179

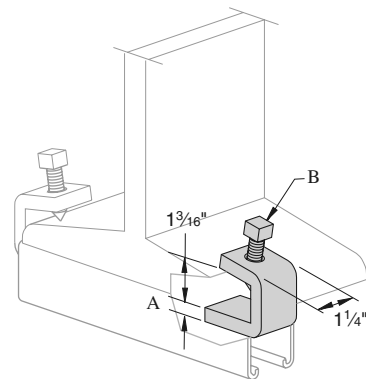
## PS 686 – Beam Clamp



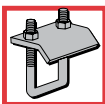
Load Rating: 600 lbs. with 12 ga. channel  
500 lbs. with 14 ga. channel

Weight/100 pcs: 26 lbs.

## PS 907, PS 998 – "I" Beam Clamp



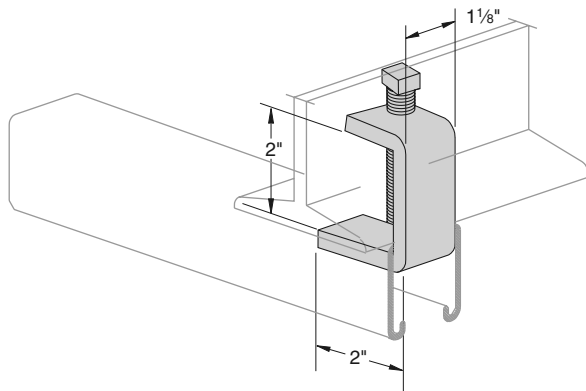
Stock Part #	Set Thickness	Load Rating Screw	Wt./ lbs.	100 pcs.
PS 907	1/4"	3/8"	450	26
PS 998	3/8"	1/2"	900	64



# BEAM CLAMPS

**Finish:** Painted Green or Electro-galvanized **Order By:** No. and Finish **Note:** Use in pairs or with other support

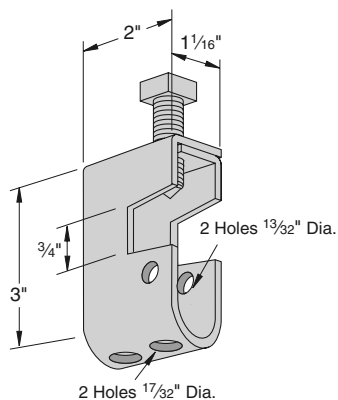
## PS 916 – “1” Beam Clamp



Stock Thickness:  $\frac{3}{8}$ "  
Load Rating: 900 lbs.

Weight/100 pcs: 72 lbs.

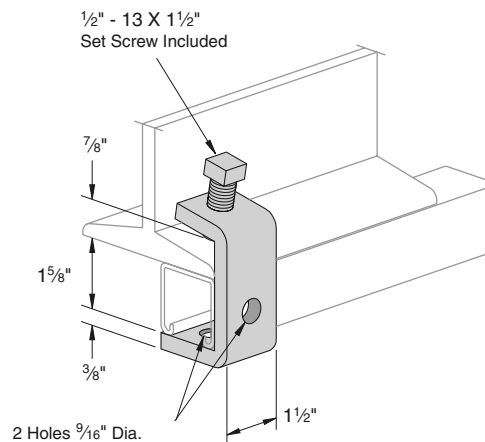
## PS 2622 – Beam Clamp



Load Rating: 300 lbs.  
Assembly including PS 736 also available.  
Order PS 2622/J6 or PS 2622/J10  
NOTE: Adaptable for  $\frac{1}{4}$ ",  $\frac{3}{8}$ " &  $\frac{1}{2}$ " rod with PS 3201.

Weight/100 pcs: 41 lbs.

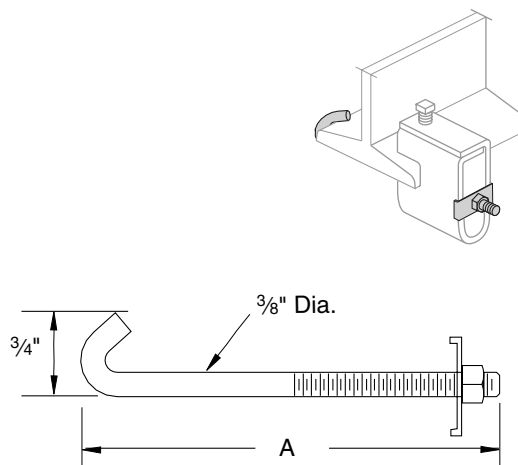
## PS 684 – “1” Beam Clamp



Stock Thickness:  $\frac{3}{8}$ "  
Load Rating: 500 lbs.

Weight/100 pcs: 94 lbs.

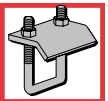
## PS 736 – Hook Rod Assembly



Part No.	Flange Max	Width Min	A Size	Wt./ 100 pcs
PS 736 J6	7"	3"	8 $\frac{5}{8}$ "	24
PS 736 J10	11"	7"	12 $\frac{5}{8}$ "	33

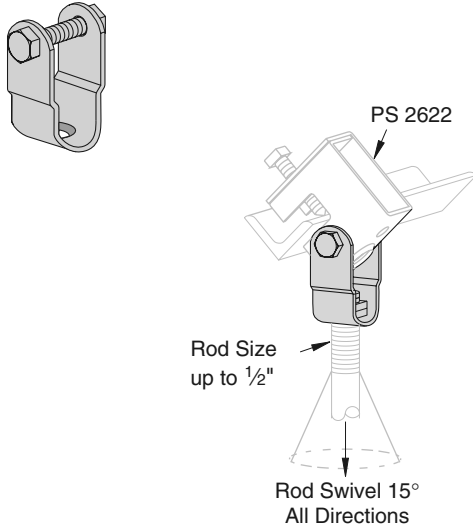
Use With: PS 2622 Beam Clamp

# BEAM CLAMPS



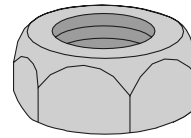
**Finish:** Painted Green or Electro-galvanized **Order By:** No. and Finish **Note:** Use in pairs or with other support

## PS 2623 – Swivel Adaptor



Use With: PS 2622 Beam Clamp or PS 2624 Wood Beam Hanger  
Load Rating: 300 lbs.

## PS 3201 – Swivel Nut

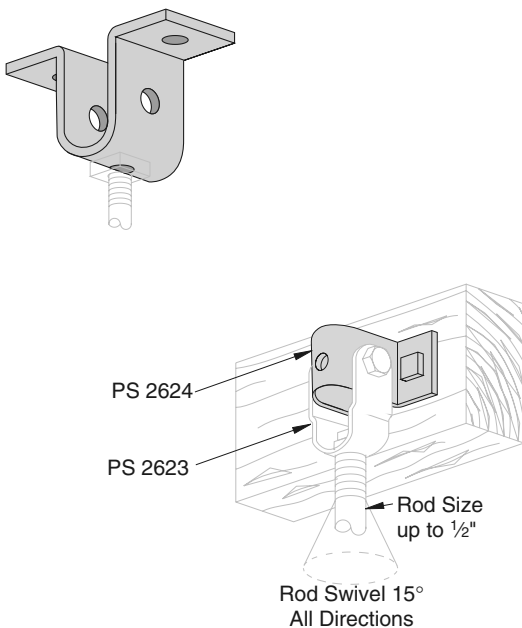


Rod Size	Wt./ 100 pcs
1/4"	4
3/8"	4
1/2"	3

Use With: PS 2622 Beam Clamp

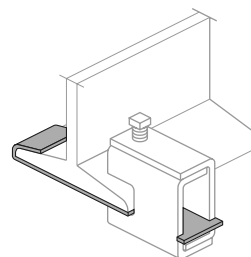
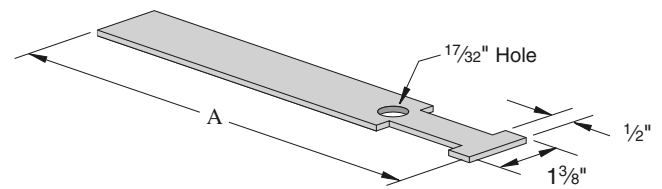
Weight/100 pcs: 31 lbs.

## PS 2624 – Wood Beam Hanger



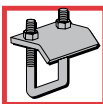
Weight/100 pcs: 22 lbs.

## PS 871 – Safety Anchor Strap



"A" Length	Wt./ 100 pcs
9"	33
12"	45
15"	57

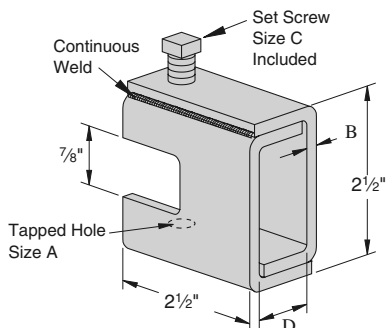
Use with: PS 858, PS 865 (Cannot be used with 5/8" rod size beam clamps and larger)



# BEAM CLAMPS

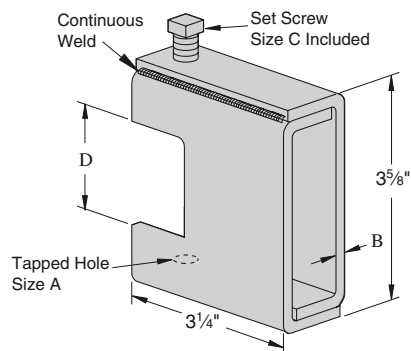
**Finish:** Painted Green or Electro-galvanized **Order By:** No. and Finish **Note:** Use in pairs or with other support

## PS 858 – Heavy Duty Beam Clamp



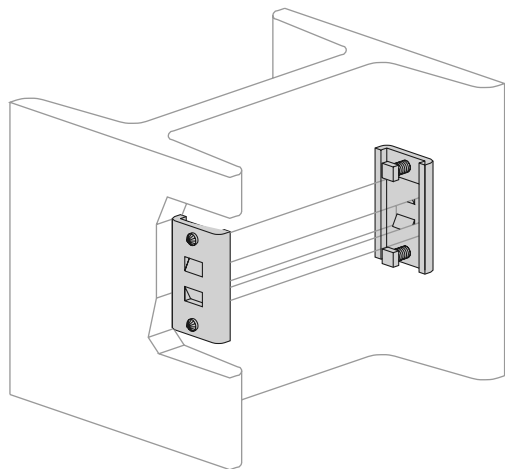
Part Number	"A" Rod Size	B	C	D	Load Ratings	Wt./ 100 pcs
PS 858 1/4	1/4" - 20	1/8"	3/8" x 1 1/2"	7/8"	650	67
PS 858 5/16	5/16" - 18	1/8"	3/8" x 1 1/2"	7/8"	650	67
PS 858 3/8	3/8" - 16	3/16"	1/2" x 1 1/2"	1 5/16"	1,100	100
PS 858 1/2	1/2" - 13	1/4"	1/2" x 1 1/2"	1 5/16"	1,600	130
PS 858 5/8	5/8" - 11	5/16"	5/8" x 1 1/2"	1 5/16"	2,400	160
PS 858 3/4	3/4" - 10	5/16"	5/8" x 1 1/2"	1 5/16"	2,400	160

## PS 865 – Wide Throat Heavy Duty Beam Clamp

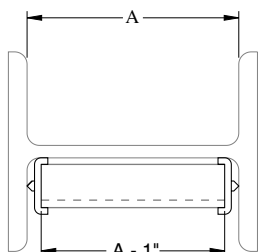


Rod Size	B	C	D	Load Ratings	Wt./ 100 pcs
3/8"	3/16"	1/2"	1 11/16"	1,100	151
1/2"	1/4"	1/2"	1 11/16"	1,600	195
5/8"	5/16"	5/8"	1 11/16"	2,400	225

## PS 2654 & PS 2654A – Column Attachment

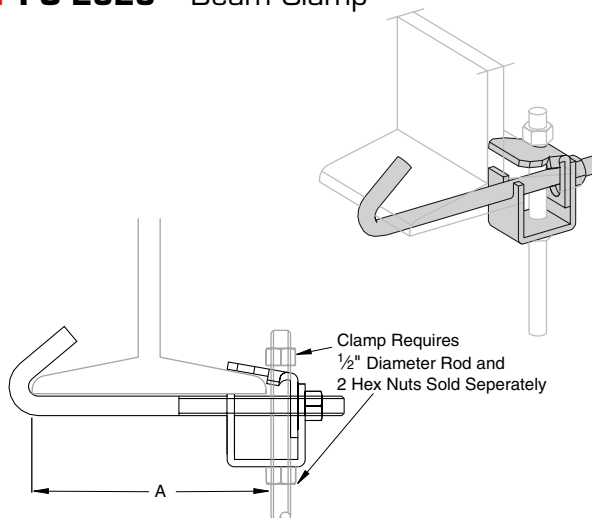


PS 2654 Use with PS 200  
 PS 2654A Use with PS 500  
 Slip Rating: 800 lbs.  
 NOTE: Column attachment can only be used in pairs.



Weight/100 pcs: 41 lbs.

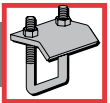
## PS 2626 – Beam Clamp



Part Number	"A" Range	Wt./ 100 Pcs
PS 2626 6	2 1/2" - 6"	125
PS 2626 9	5 1/2" - 9"	140
PS 2626 12	8 1/2" - 12"	171

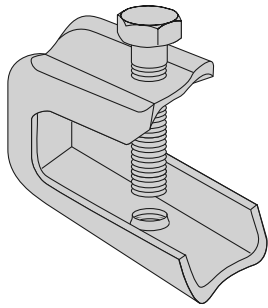
Finish: Plain, painted green or electro-galvanized  
 Load Rating: 500 lbs.

# BEAM CLAMPS



**Finish:** Painted Green or Electro-galvanized **Order By:** No. and Finish **Note:** Use in pairs or with other support

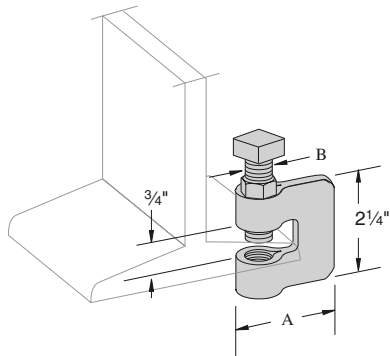
## PS 135X – Light Duty Beam Clamp



Material: Steel  
Use With: 1/4" rod  
Load Rating: 75 lbs.

Weight/100 pcs: 14 lbs.

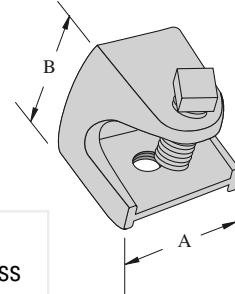
## PS 95 – "C" Clamp



Rod Size	A	B	Load Rating	Wt./ 100 pcs
3/8"	2 <sup>5</sup> / <sub>16</sub> "	3/8"	330	35
1/2"	2 <sup>1</sup> / <sub>4</sub> "	1/2"	380	41
5/8"	2 <sup>3</sup> / <sub>8</sub> "	5/8"	450	67
3/4"	2 <sup>1</sup> / <sub>4</sub> "	1/2"	500	72

Material: Steel  
NOTE: UL Listed for 3/8" rod.

## PS 85 – Rod or Insulator Support

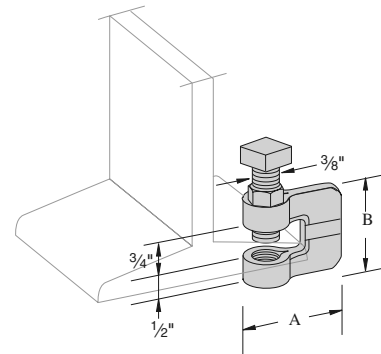


7/8" Maximum Flange Thickness

Rod Size	A	B	Load Ratings	Wt./ 100 pcs
1/4"	1 <sup>1</sup> / <sub>8</sub> "	1 <sup>1</sup> / <sub>4</sub> "	150	23
3/8"	2"	2"	350	95
1/2"	2 <sup>5</sup> / <sub>8</sub> "	2 <sup>1</sup> / <sub>2</sub> "	400	195

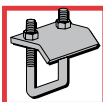
Material: Malleable Iron

## PS 86 – "C" Clamp



Rod Size	A	B	Load Rating	Wt./ 100 pcs
3/8"	1 <sup>11</sup> / <sub>16</sub> "	1 <sup>3</sup> / <sub>4</sub> "	400	38
1/2"	1 <sup>23</sup> / <sub>32</sub> "	1 <sup>3</sup> / <sub>4</sub> "	400	52
5/8"	1 <sup>15</sup> / <sub>16</sub> "	2"	450	68
3/4"	2 <sup>1</sup> / <sub>32</sub> "	2"	600	128

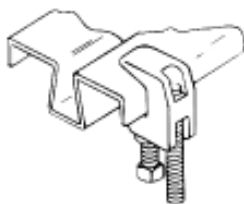
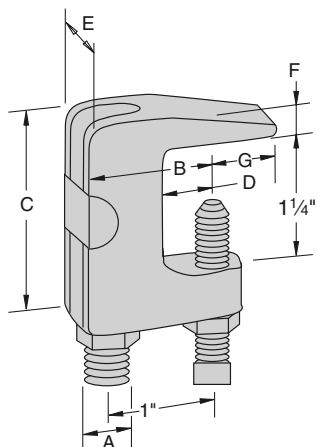
Material: Malleable Iron, Steel Set Screw  
NOTE: UL Listed for 3/8" rod.



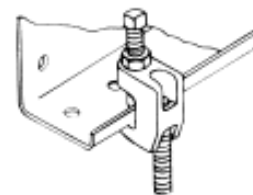
# BEAM CLAMPS

**Finish:** Painted Green or Electro-galvanized; **Order By:** No. and Finish; **Note:** Use in pairs or with other support

## PS 93 – Universal “C” Clamp



At least one full thread must be exposed

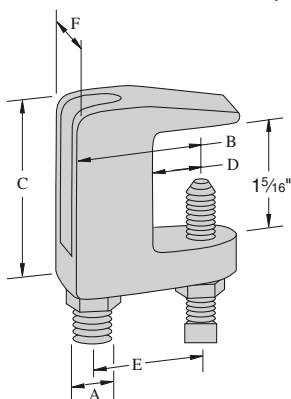


Rod Size	DIMENSIONS (Inches)						Max. Pipe Size	Max. Load (Lbs.)	Wt/ 100 pcs
	A	B	C	D	E	F			
3/8	1 5/16	2	3/4	7/8	3/8	5/8	4	400	41
1/2	1 3/8	2	3/4	7/8	7/16	13/16	8	500	75

• Maximum temperature of 450° F

Material: Malleable Iron, Steel Set Screw

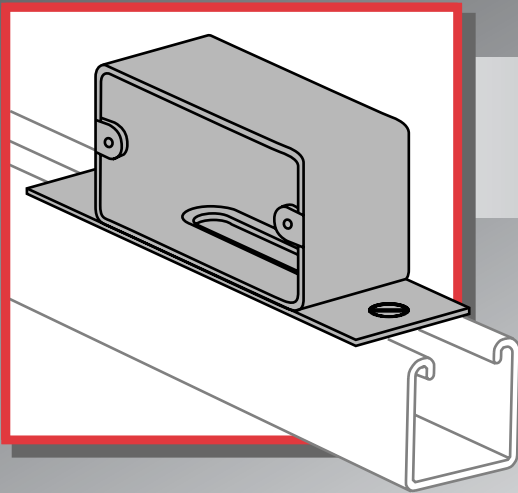
## PS 94 – Wide Throat Top Beam “C” Clamp



Rod Size	DIMENSIONS (Inches)						Max Pipe Size	Max. Load (Lbs.)	Wt/ 100 pcs
	A	B	C	D	E	F			
5/8	1 3/4	2 1/4	3/4	1 1/4	1	10	600	66	
3/4	1 7/8	2 3/8	3/4	1 3/8	1 3/16	12	800	83	

• Maximum temperature of 450° F

Material: Malleable Iron, Steel Set Screw



## ELECTRICAL

*Power-Strut offers a versatile means of supporting lighting, conduits, cable and other portions of an electrical system. Power-Strut is listed as an electrical raceway by Underwriters laboratories as specified by the National Electric Code (Article 352), and CSA approved in accordance with the Canadian Electrical Code (Part 1).*

---

### **MATERIAL:**

Power-Strut electrical raceways are cold formed from low carbon steel and meet the requirements of ASTM A-1011 Grade 33 in painted green or ASTM A-653 Grade 33 in pre-galvanized material. Plain or electro-galvanized fittings conform to the ASTM A-635 or ASTM A-36 standards while pre-galvanized fittings meet the requirements of ASTM A-653 Grade 33.

---

### **STANDARD LENGTHS:**

Standard lengths of electrical raceway are 10 and 20 feet. The Power-Strut closure strips are available only in 10 foot lengths.

---

### **STANDARD FINISH:**

Electrical raceway channel is available in a painted green or pre-galvanized finish. All Power-Strut fittings are available in painted green or electro-galvanized finish. Many fittings are available in pre-galvanized.

---

### **ORDERING INFORMATION:**

When ordering, add the length or size and finish to the part number. See pages 8-10 for finish abbreviations and an example.